

Indomo[®] Homelifts



LIFTINGITALIA[®]

HOMELIFTS MADE IN ITALY







InDomo[®]

Why a home lift?

Our home lifts are designed to solve the needs of vertical mobility and to remove architectural barriers in all environments, both private and public.

They represent the ideal solution to overcome the stairs and rediscover the pleasure of moving freely in every moment of the day.

They can be installed both inside and outside the building in special metal structures or between the walls of the house.

They ensure a high level of ride comfort, great reliability and total safety, for example guaranteed by the automatic emergency lowering system in the event of a power failure.

They can be installed in new buildings but fit perfectly every existing environments, increasing their value.

Safety

Thanks to the wide range of specific devices you can move every day around the house without worries.

Comfort

It can be operated by pressing the button, both in the cabin and on the landings. Choosing the version with automatic sliding or folding doors in the car, you will not have to hold the button pressed during the entire travel.

Style

Decorate the space in motion by choosing the finishes that best suit your environments and satisfy your taste as you would do for any furnishing accessory. Our renewed range of cabins, Smart - Idea - Style and Opera, best represents the expression of MADE IN ITALY.

Indoor and outdoor homelifts

InDomo can be installed both inside and outside the building to ensure maximum accessibility at all levels.

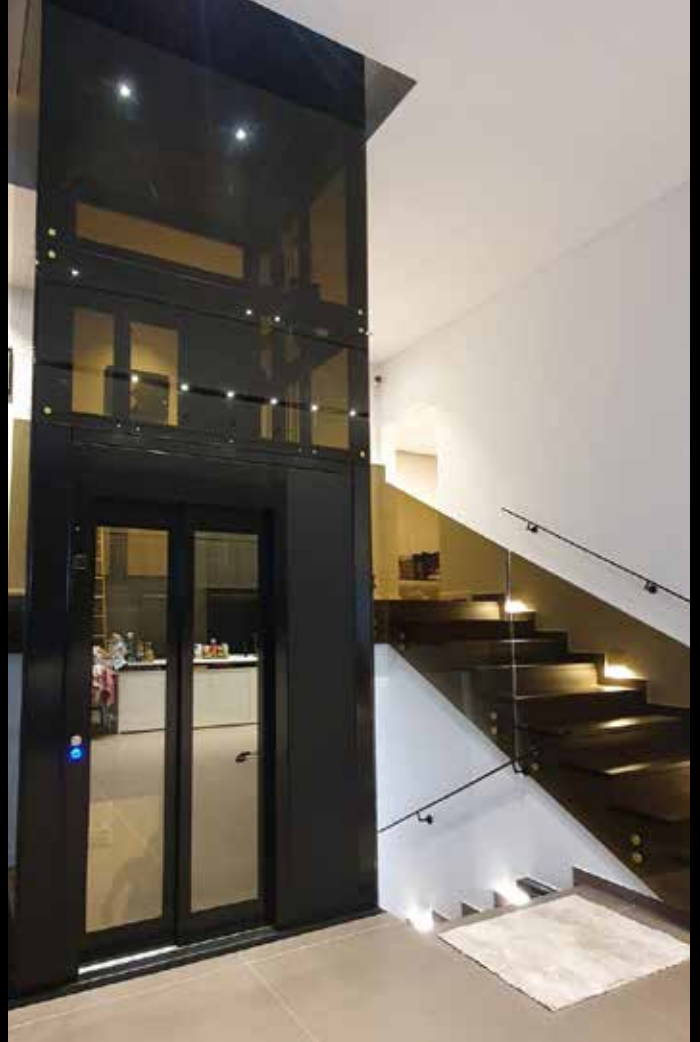
If you do not have specific shaft you can connect the lift directly to the balcony or using existing windows modified to obtain the necessary entrances.



Small elevators for private homes and public environments

Our products find their natural connotation mainly in private homes to help you live fully your environments.

Nevertheless, they are the ideal solution to overcome architectural barriers in public environments like schools, shops, restaurants, offices can guarantee the right solution to all needs.



Masonry shaft or metallic structure

The lift travels inside a shaft to guarantee the maximum safety, according to the law. The shaft can be obtained inside the house making it in masonry or concrete.

Alternatively we can provide a metal structure designed for indoor or outdoor (since it is weather-proof), certified according to the anti-seismic rules. The structure has multiple finishes and can be completely glazed to ensure good aesthetic result, lightness and visibility.



Swing doors or automatic doors

As standard, InDomo lifting platforms are offered with swing glazed doors that guarantee maximum visibility and passive safety.

They can also be equipped with automatic sliding doors or with internal folding doors and external automatic swing doors (MyDomo) which allow automatic control avoiding to keep the button pressed during the entire travel.





SPECIAL EDITION

TOTAL BLACK

Elegance and great charm

Total Black to guarantee elegance and great charm, enhancing the most particular places.

Each detail is proposed in the desired colour: cabin walls, ceiling, handrail, push-button panel, structure and doors will be painted in an elegant colour. Refined Granit floors in white and black tones will match the design.

SPECIAL EDITION

TOTAL WHITE

Purity and brightness

Total White to give purity and brightness to any room.



Cabin

SMART

Beauty
and simplicity

With its up-to-date, minimalist and yet affordable design, this is LiftingItalia best-selling cabin, now available with new eye-catching skinplate texture finishes.



Full height COP
in scotch brite ST/ST



Cabin

IDEA

Elegance
and flexibility

Bright, fresh and available in a wide colour range, this cabin boasts a plain and youthful design that brings sparkle to its surroundings. IDEA is the cabin designed specifically for panoramic lifts and offers the possibility of having up to three glass walls.



Full height COP in
anodized aluminum

Internal car profiles
in anodized aluminum

External wall cladding
in anodized aluminum



Cabin

STYLE

Timeless style

The material combinations are designed to exalt the enduring look of the stainless steel, which enhance both classic and modern environments.



Full height COP in polished
Mirror ST/ST



Cabin

OPERA

Warmth and
accessible luxury

We chose a selection of the most interesting contemporary design materials, to create a uniquely refined cabin design.



3/4 height COP
in anodized aluminum

Internal car profiles
in anodized aluminum

External wall cladding
in anodized aluminum

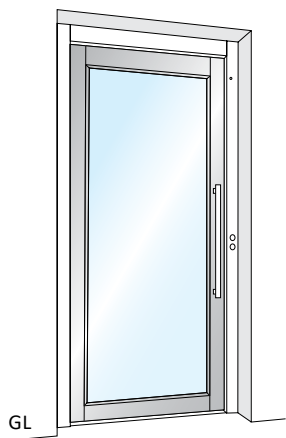




Doors

LINE DOOR

Single panel swing door



Aluminum Handle
Height 700 mm
Cod. ML.05
(Standard)

Single panel swing door; **manual opening and automatic closing.**

Available versions:

- GL (glazed - standard)

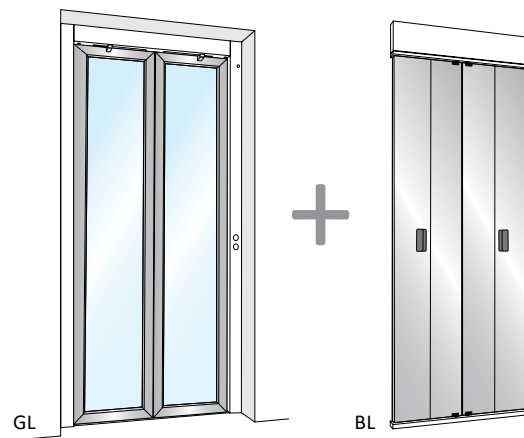
- Landing door finishes:
Silver anodized aluminium (standard) and Painted steel



Stainless Steel Handle
Height 700 mm
Cod. ML.06
(Optional)

AUTOMATIC DOORS KIT MYDOMO-PACK

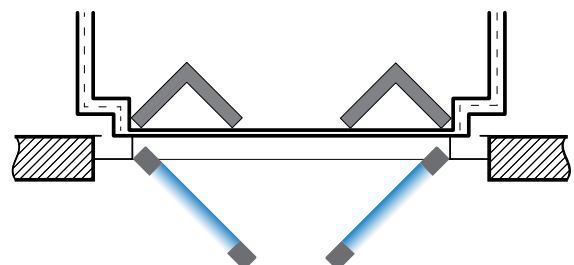
Double panels swing automatic landing door



Double panels swing landing door coupled with a folding car door **completely automatic in opening and closing** operations. A safety device stops the movement in case of obstruction.

MyDomo landing door and Twist folding car door are also available:

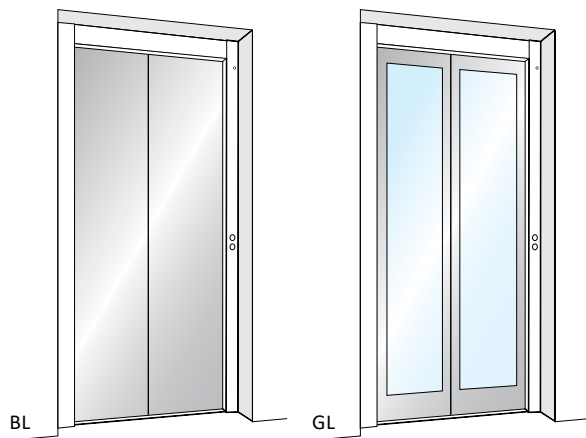
- BL (blind)
- GL (glazed)





2 PANELS AUTOMATIC

Centre opening door



Car and landing 2 panels **automatic centre opening** door with safety device to re-open in case of obstructions.

Versions:

- BL (blind - standard)
- GL (glazed)

Available also:

- Fire rated E120
- Fire proof EI120

- Standard finishes:

F12PPS - A80SMA - PPS10 - DT 65 Skinplate

- Optional finishes:

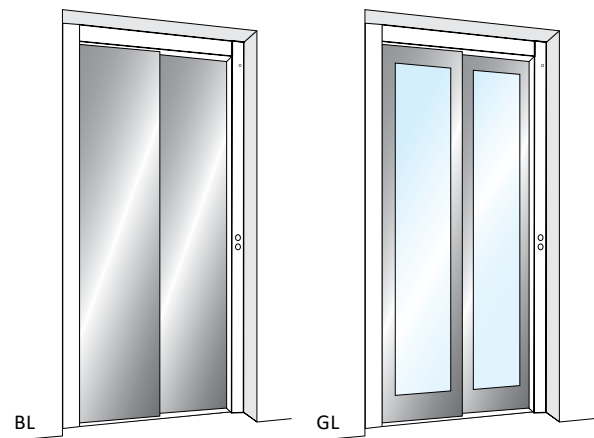
Stainless Steel and Painted steel

- Entry-level finish:

RAL 7032 smooth and repaintable primer

2 PANELS AUTOMATIC

Side opening door



Car and landing 2 panels **automatic side opening** door with safety device to re-open in case of obstructions.

Versions:

- BL (blind - standard)
- GL (glazed)

Available also:

- Fire rated E120
- Fire proof EI120

- Standard finishes:

F12PPS - A80SMA - PPS10 - DT 65 Skinplate

- Optional finishes:

Stainless Steel and Painted steel

- Entry-level finish:

RAL 7032 smooth and repaintable primer

COP

COP STANDARD CONFIGURATION

- ☞ Braille push buttons
- ☞ Alarm button
- ☞ Luminous and acoustic overload signal
- ☞ Door open push button (only with automatic doors)
- ☞ Emergency STOP button (only without car doors)
- ☞ Emergency light
- ☞ Two-way intercom

PUSH BUTTONS

- ☞ The push button (∅ 29,6 mm) features Braille code
- ☞ Blue backlight
- ☞ Dimensions with bezel 42 x 38 mm
- ☞ Matt stainless steel/gold finish



OPTIONS

- ☞ Enabling key
- ☞ Magnetic iButton key
- ☞ Position and direction displays
- ☞ Phone dialler
- ☞ Wall phone
- ☞ In-built telephone box (where possible)
- ☞ LCD Display (5,6")
- ☞ TFT Display (7")



←
Embossed COP,
anodized aluminum,
3/4 height or full height

Width 220 mm
Depth 25 mm

→
Flush COP,
full height,
scotch brite or mirror
finish stainless steel

Width 220 mm

Display

CAR DISPLAY - OPTIONAL



TFT (7")
Without frame
Dimensions:
154 x 86 mm



Tricolor LCD (5,6")
With metal frame
Dimensions:
120 x 60 mm

LANDING DISPLAY - OPTIONAL



Car position
display
with frame
mounted
on the transom



On the wall
With metal
frame

Ceilings

PLEXY CEILING

not backlighted (standard)



- Standard ceiling for **SMART - IDEA - OPERA cars**
- Standard finishes: **Scotch Brite Stainless Steel** and **Anodized aluminium**
- Optional finishes: **Mirror Stainless Steel**

COUNTER-CEILING QUADRO

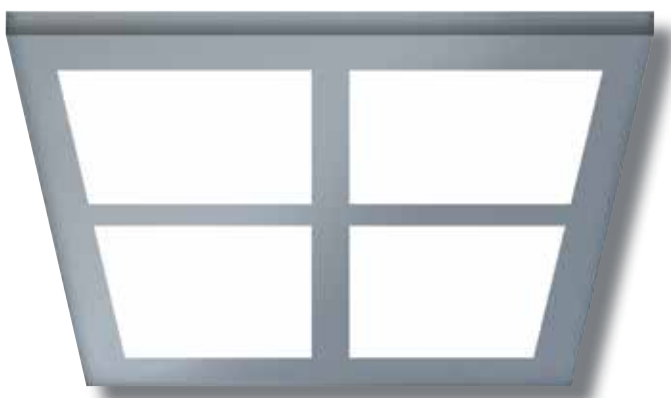
backlighted



- Standard counter-ceiling for **STYLE car**
- Optional counter-ceiling for **SMART - IDEA - OPERA cars**
- Standard finishes: **Scotch Brite** or **Mirror Stainless Steel**

COUNTER-CEILING WINDOW

backlighted



- Standard counter-ceiling for **STYLE car**
- Optional counter-ceiling for **SMART - IDEA - OPERA cars**
- Standard finishes: **Scotch Brite** or **Mirror Stainless Steel**

COUNTER-CEILING SPOTLIGHTS

with LED spot lights

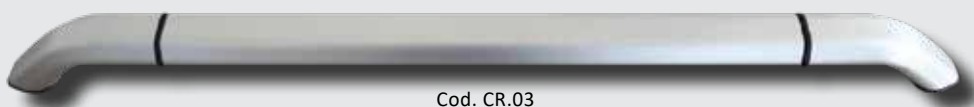


- Standard counter-ceiling for **STYLE car**
- Optional counter-ceiling for **SMART - IDEA - OPERA cars**
- Standard finishes: **Scotch Brite** or **Mirror Stainless Steel**

Handrail

Modular aluminum handrails with the following finishes:

- natural anodized aluminum
Cod. CR.03
- aluminum stainless steel effect
Cod. CR.04



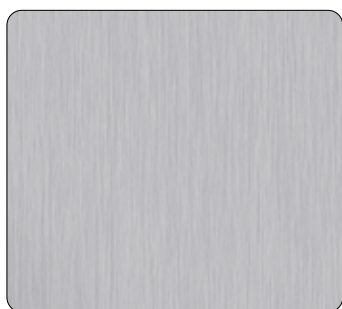
Cod. CR.03



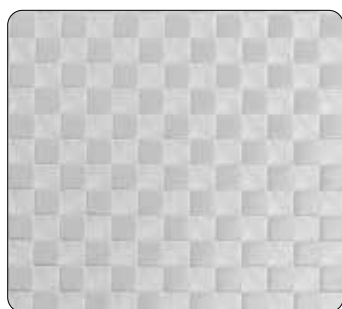
Cod. CR.04

Finishes - Stainless Steel

For car walls and automatic doors



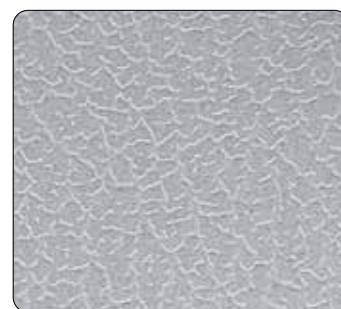
Satin Gr. 240
Stainless Steel



D21 Square
Stainless Steel



D25 Linen
Stainless Steel



D42 Leather
Stainless Steel



Scotch Brite
Stainless Steel



Mirror
Stainless Steel

For LINE doors



Anodized aluminium

Finishes - Skinplate

For automatic door and IDEA and SMART cars (* cars only)



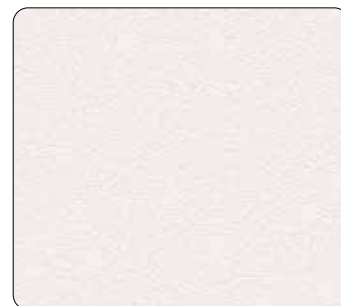
DT 63 *
Rough Fabric



DT 64 *
Kaki Fabric



DT 65
Grey Fabric



A80SMA
White Ice



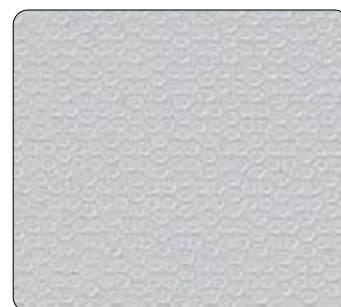
A90GTA *
Cream - Canvas effect



F12PPS
Stainless-Look



PPS10
Marble



F21PVA *
Dotted Silver

Finishes - Laminate HPL

MONOCHROMATIC FINISHES - For IDEA and OPERA cars



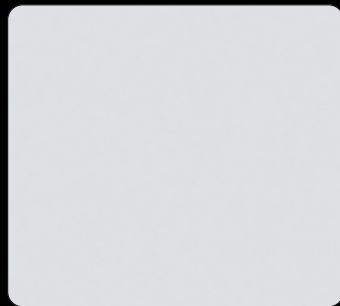
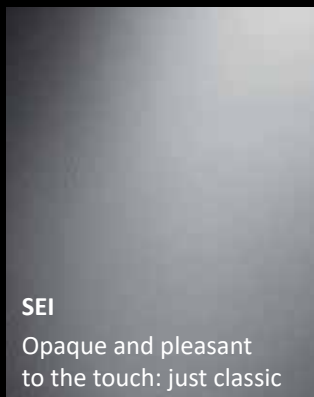
2904
White ice - Polaris



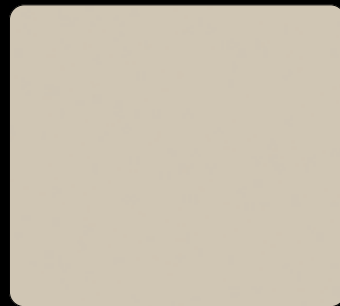
2910
Light grey - Polaris



2902
Black - Polaris



410
White ice



414
Sand



868
Medium grey

MATERIAL FINISHES - For IDEA and OPERA cars



1385 - Vertical Texture
White Ash



1381 - Horizontal Texture
Transversal Oak



1389 - Vertical Texture
Noce Iseo



558
Ostuni



557
Ostuni



421
Ostuni

Finishes - Floors

GRANITE AGGLOMERATE



GRANIT 607
Polar Ice



GRANIT 431
White

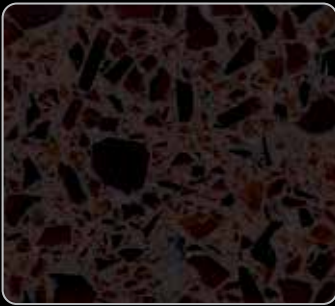


GRANIT 2402
Dove Tail

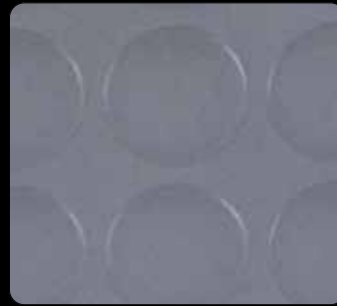


GRANIT 646
Black Diamond

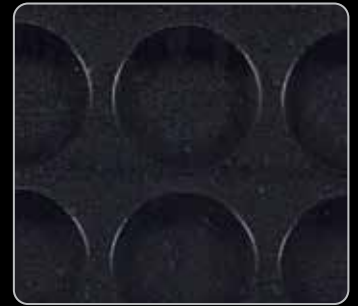
ROUND STUDDED RUBBER



GRANIT 663
Vetro Moretti



G804
Light Grey



N004
Black

PVC "ETERNAL COLLECTION"



13772
Eternal Brushed Aluminium



13712
Eternal Brushed Chrome



42292
Eternal Charcoal Slate

ALUMINIUM



5 bar aluminium tread plate

Finishes - Glasses and mirrors



Natural
- Standard

Acid
Etched

Natural
Milky White

Smoke Grey

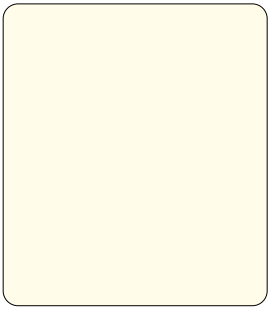
Smoke Bronze

Bronze Stopsol

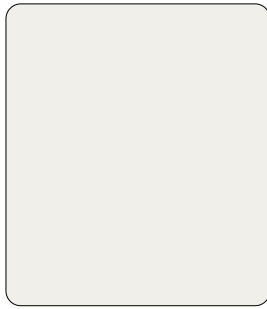
Mirror

Finishes - Paints

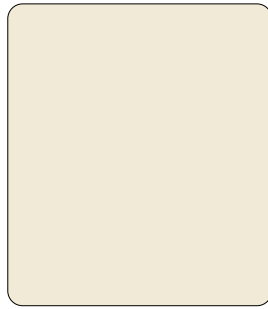
CRINKLED FINISH



RAL 9010
Pure white



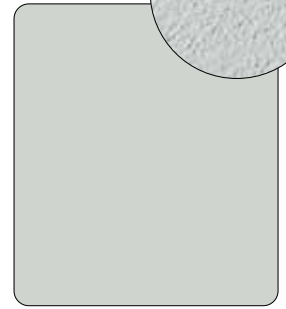
RAL 9016
Traffic white



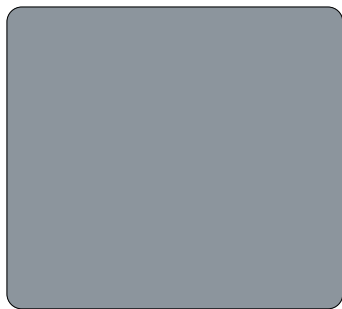
RAL 1013
Oyster white



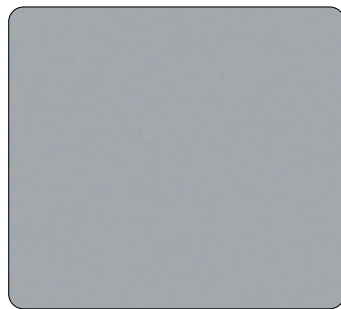
DESERT ROSE
Sand



RAL 7035
Light grey



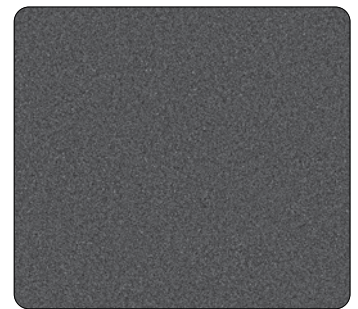
RAL 7001
Silver grey



RAL 9006
White aluminium



RAL 9007
Grey aluminium



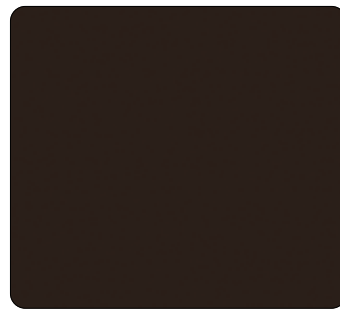
GREY MICA
Grey mica



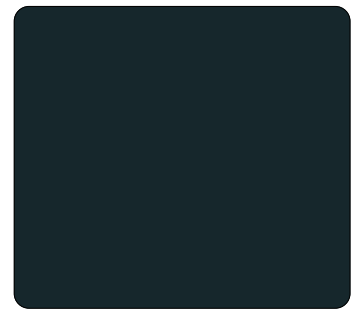
BLASTED COPPER
Copper



ANTIQUÉ RUST
Corten

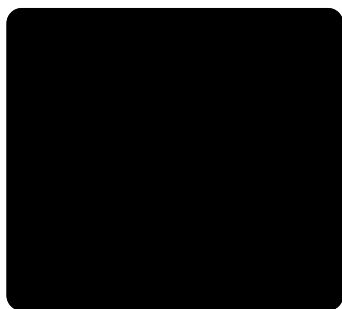


RAL 8019
Grey brown

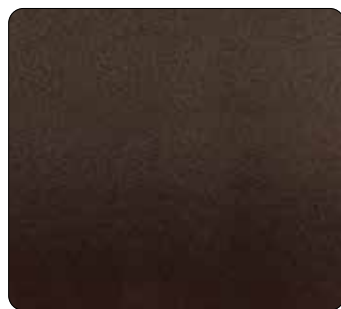


RAL 7016
Anthracite grey

SMOOTH FINISH



RAL 9005
Jet black



BRONZE - Y540NE3
Metallized Bronze

SMOOTH FINISH



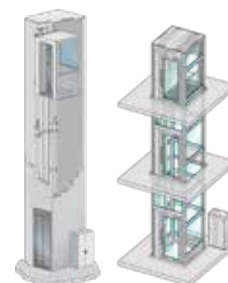
GOLD - K500Y08
Metallized Gold

OPTIONAL



RAL painting
Complete RAL range

Overall installation configurations



PRODUCT SPECIFICATIONS

| | InDomo |
|---------------------|--------|
| MAX PAYLOAD | 500 kg |
| MAX TRAVEL | 20 m |
| MAX ENTRANCES | 3 |
| MAX STOPS (in line) | 8 |

SHAFT

| | |
|---|-------------------------------------|
| CONCRETE OR MASONRY | <input checked="" type="checkbox"/> |
| STEEL STRUCTURE, PAINTED RAL | <input type="checkbox"/> |
| STAINLESS STEEL STRUCTURE (AISI 304 or AISI 316 FOR MARINE ENVIRONMENT) | <input type="checkbox"/> |

CARS

| | |
|---------------|-------------------------------------|
| SMART | <input checked="" type="checkbox"/> |
| STYLE | <input type="checkbox"/> |
| IDEA | <input type="checkbox"/> |
| OPERA | <input type="checkbox"/> |
| 1 GLASS WALL | <input type="checkbox"/> |
| 2 GLASS WALLS | <input type="checkbox"/> |

CAR DOORS

| | |
|--|-------------------------------------|
| WITHOUT DOOR (with LIGHT CURTAIN) | <input checked="" type="checkbox"/> |
| AUTOMATIC SLIDING, 2-PANELS SIDE OPENING (BL-GL) | <input type="checkbox"/> |
| AUTOMATIC SLIDING, 2-PANELS CENTRE OPENING (BL-GL) | <input type="checkbox"/> |
| AUTOMATIC TWIST FOLDING 2-PANELS (BL-GL) | <input type="checkbox"/> |
| AUTOMATIC TWIST FOLDING 4-PANELS (BL-GL) | <input type="checkbox"/> |

LANDING DOORS

| | |
|---|-------------------------------------|
| LINE GL - ALUMINIUM (GLAZED version) | <input checked="" type="checkbox"/> |
| IRON - STEEL (BL ¹) | <input checked="" type="checkbox"/> |
| MyDOMO pack (coupled with TWIST) (GL-BL) | <input type="checkbox"/> |
| AUTOMATIC SLIDING, 2-PANELS SIDE OPENING (BL-BL ¹ -GL) | <input type="checkbox"/> |
| AUTOMATIC SLIDING, 2-PANELS CENTRE OPENING (BL-BL ¹ -GL) | <input type="checkbox"/> |

HYDRAULIC TRACTION

| | |
|------------------------|-------------------------------------|
| Indirect acting 2:1 | <input checked="" type="checkbox"/> |
| Side direct acting 1:1 | <input checked="" type="checkbox"/> |

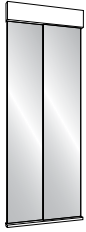
(1) available also E120 and FIRE RATED EI120 executions

| LEGEND | <input checked="" type="checkbox"/> Standard | <input checked="" type="checkbox"/> Option, no extra price | <input type="checkbox"/> Optional | <input type="checkbox"/> Not available |
|--------|--|--|-----------------------------------|--|
| | BL: BLIND version | GL: GLAZED version | | |

AVAILABLE ALSO WITH
AISI 316 STRUCTURE FOR
MARINE ENVIRONMENT

CAR DOORS

AUTOMATIC SIDE OPENING



2-PANELS LATERAL OPENING

AUTOMATIC CENTRE OPENING



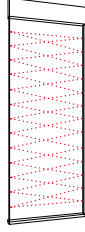
2-PANELS CENTRE OPENING

AUTOMATIC FOLDING DOORS



TWIST 4-PANELS

LIGHT CURTAIN



WITHOUT CAR DOOR

CABIN - STYLES SCHEME

CEILING

LIGHT SPOTS

MIRROR

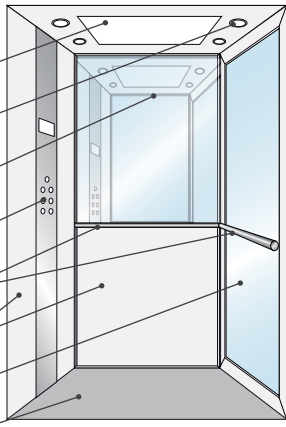
C.O.P.

HANDRAIL

BLIND WALLS

GLASS WALL

FLOOR

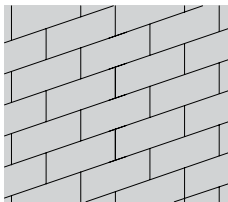
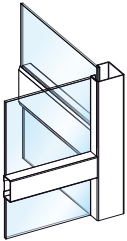


Car view from outside

SHAFT

ANTISEISMIC CROSS 50.2 STRUCTURE

CONCRETE AND/OR MASONRY WALL



LANDING DOORS

SIDE-OPENING AUTOMATIC



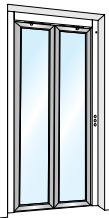
2-PANELS LATERAL OPENING

CENTRE OPENING AUTOMATIC



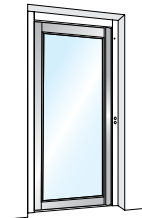
2-PANELS CENTRE OPENING

DOUBLE SWING AUTOMATIC



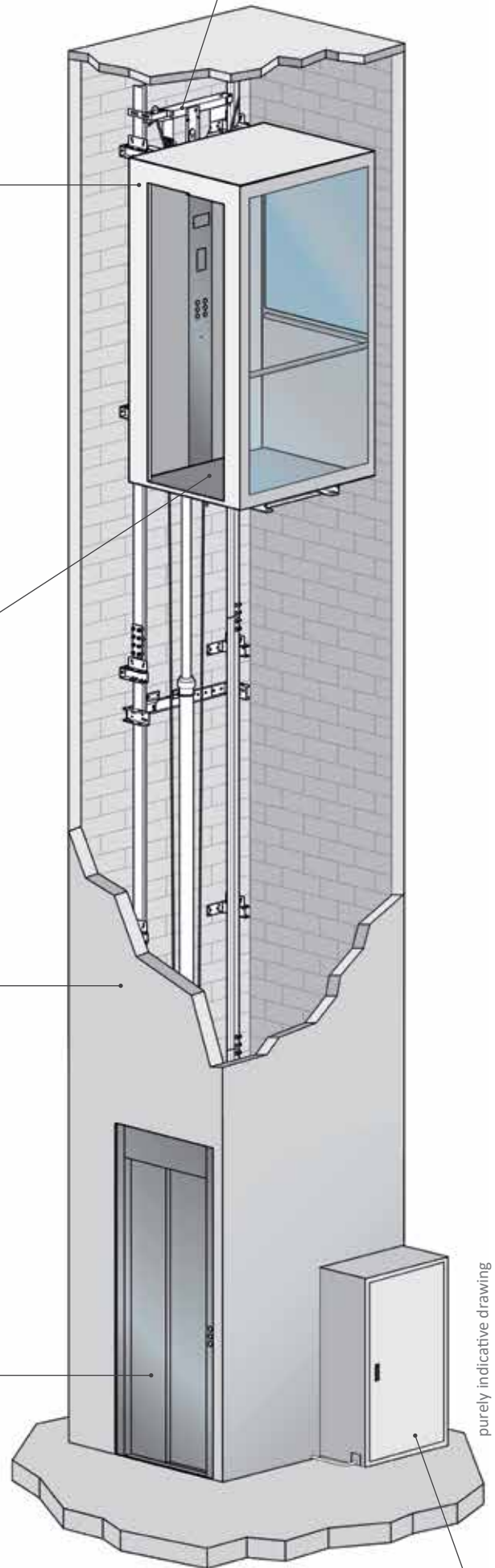
MYDOMO (2-PANELS)

SINGLE SWING MANUAL



LINE GL

EXAMPLE OF HYDRAULIC INSTALLATION (2 :1)



HYDRAULIC PUMP AND CONTROL PANEL IN METAL CABINET (OPTIONAL)

purely indicative drawing

InDomo masonry shaft



Outdoor



Indoor



Suggested
use



Suggested
use



Max payload



230 VAC
single phase

STRENGTH AND RELIABILITY

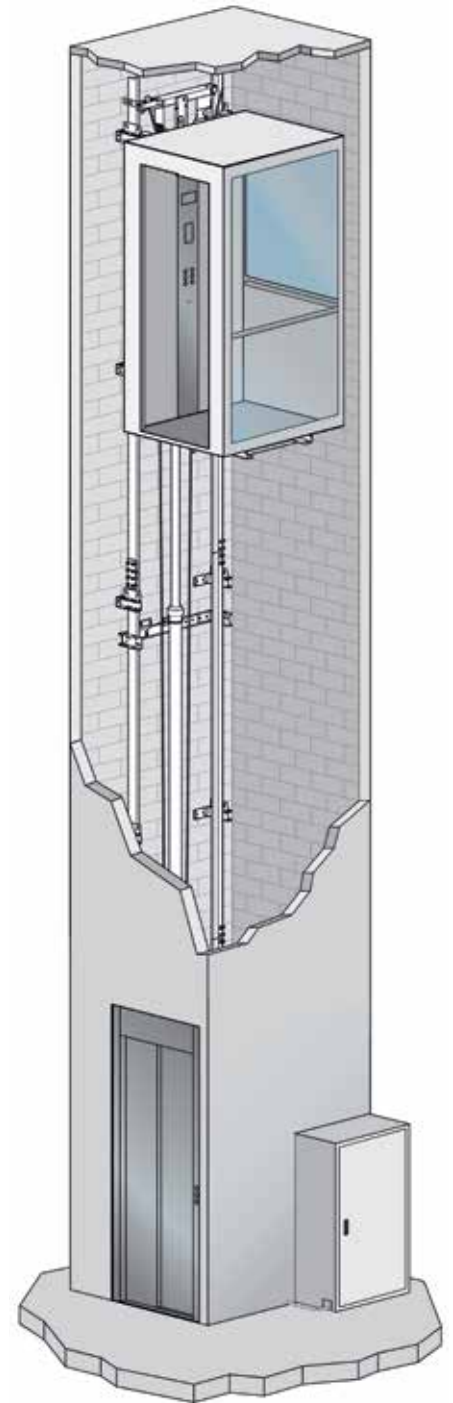
InDomo means reliability and safety. Thanks to the hydraulic traction, to the solid structure and to the safety devices (blackout emergency descent, automatic rescue call and much more) you will never have to fear of being stuck in the cabin.

TOP COMFORT AT THE BEST PRICE

InDomo is the mini-lift for those who don't accept compromises. Top comfort and quietness, smooth starts and stops, great lighting and best technologies create the best travel experience in the category.

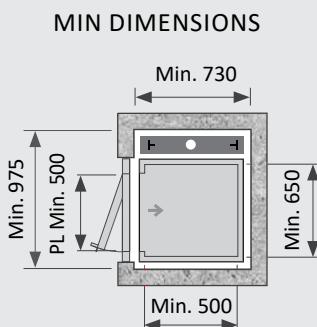
LIVING SPACE

The new range shows a completely renewed line of cabins, with a clean and essential design which will give your house an unmistakable touch of elegance.

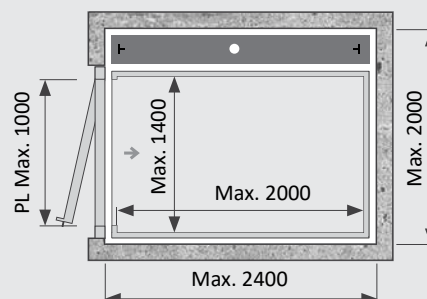


| | |
|------------------------------------|--|
| PAYLOADS | From 250 up to 500 kg |
| TRAVEL | Up to 20 m |
| STOPS | Up to 8 (in line) |
| ENTRANCES | Up to 3 |
| SPEED | 0,15 m/s (EU) - 0,30 m/s (extra-EU) |
| SHAFT | Masonry shaft or Anti-seismic structure |
| CONTROL | Hold to run or Automatic |
| NOISE LEVEL | Max. 47 dB |
| CABIN DIMENSION | Max. 1400 (L) x 2000 (P) * |
| CABIN HEIGHT (CH) | Std. 2100 mm (Min. 2000 - Max. 2200) |
| DOOR HEIGHT (LH) | Std. 2000 mm (Min. 1800 - Max. 2100) |
| HEADROOM (LH 2000) | Min. 2300 mm - Max. 2570 mm |
| PIT | Min. 100 mm - Max. 500 mm |
| CYCLES/HOUR SUGGESTED | 15 |
| POWER SUPPLY | Single phase 230 Vac (3-phase 400 Vac as option) |
| CONTROL PANEL AND HYDRAULIC SYSTEM | In metal cabinet (optional) |
| REFERENCE REGULATION | D.M. 2006/42/CE - EN81.41 |

CUSTOM DIMENSIONS WITH 5 MM STEPS



MAX DIMENSIONS



*Min. and max. reference values cannot be configured together (subject to feasibility study)

InDomo

metallic structure 50.2



Outdoor



Indoor



Suggested
use



Suggested
use



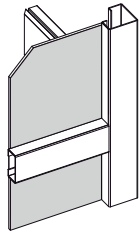
Max payload



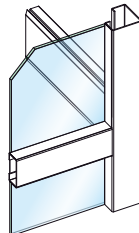
230 VAC
single phase

STRENGTH AND BEAUTY

CROSS 50.2 2 is a steel structure for lift and lifting platform, suitable to be placed both inside and outside the building, consisting of bolted uprights and connecting crosspieces, bolted, prepared for fixing glasses or panels from inside the structure. The CROSS 50.2 structures are tested according to the NTC2008 standards for installations in seismic zones. It has clean lines that suit all environments, both outdoor and indoor. Thanks to this structure, expensive masonry work is no longer necessary except for landing on the floor in case it was not planned.

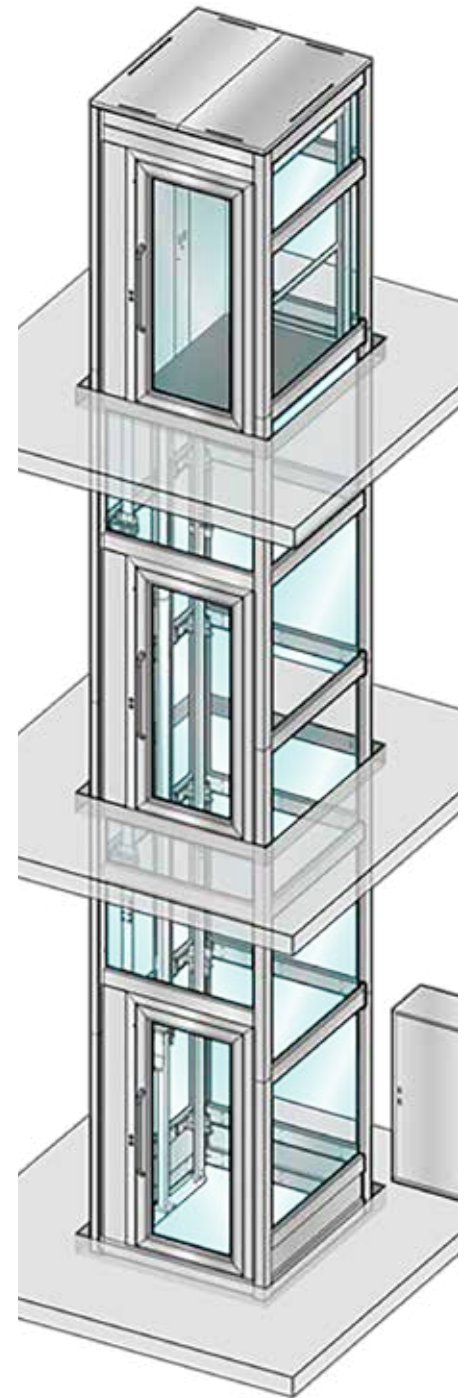


BL: blind version



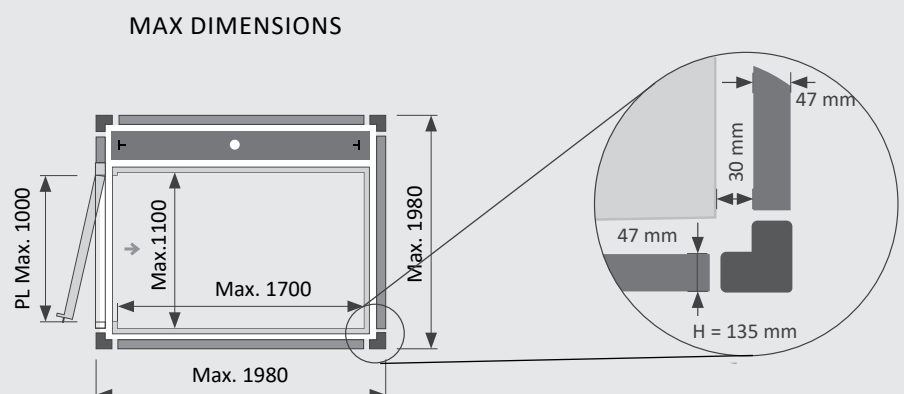
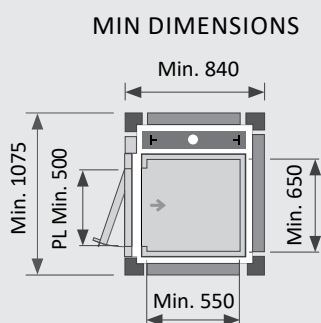
GL: glazed version

| | |
|------------------------------------|--|
| PAYLOADS | From 250 up to 500 kg |
| TRAVEL | Up to 20 m |
| STOPS | Up to 8 (in line) |
| ENTRANCES | Up to 3 |
| SPEED | 0,15 m/s (EU) - 0,30 m/s (extra-EU) |
| SHAFT | Masonry shaft or Anti-seismic structure |
| CONTROL | Hold to run or Automatic |
| NOISE LEVEL | Max. 47 dB |
| CABIN DIMENSION | Max. 1400 (L) x 2000 (P) * |
| CABIN HEIGHT (CH) | Std. 2100 mm (Min. 2000 - Max. 2200) |
| DOOR HEIGHT (LH) | Std. 2000 mm (Min. 1800 - Max. 2100) |
| HEADROOM (LH 2000) | Min. 2300 mm - Max. 2570 mm |
| PIT | Min. 100 mm - Max. 500 mm |
| CYCLES/HOUR SUGGESTED | 15 |
| POWER SUPPLY | Single phase 230 Vac (3-phase 400 Vac as option) |
| CONTROL PANEL AND HYDRAULIC SYSTEM | In metal cabinet (optional) |
| REFERENCE REGULATION | D.M. 2006/42/CE - EN81.41 |



CUSTOM DIMENSIONS
WITH 5 MM STEPS

AVAILABLE WITH STAINLESS STEEL AISI316



*Min. and max. reference values cannot be configured together (subject to feasibility study)

InDomo[®]

Homelifts



LIFTING ITALIA S.r.l.
Via Caduti del Lavoro, 16
43058 Bogolese di Sorbolo (Parma)
Tel. 0521 695311
www.liftingitalia.com



MADE IN ITALY

